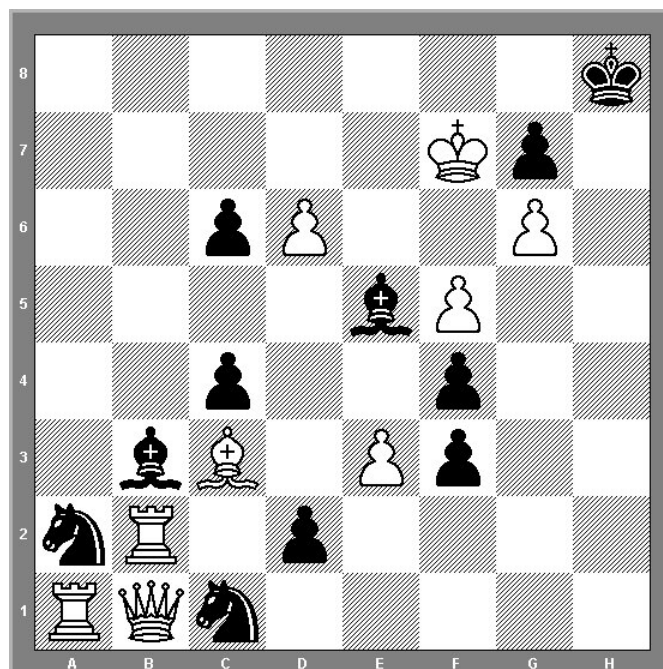


Berks and Bucks Congress 2009

Solution to Problem By Sir Jeremy Morse (The Observer 1967)

Black (11 Men)



White (9 Men)

1 Qe4 Zugzwang

There is no threat, but every Black move leads to mate. If either Knight moves, the Rook on a1 mates on a8 or h1. If the Bishop on b3 moves, or the pawn on d2 promotes, the Rook on b2 mates on b8 or h2. If the Bishop on e5 captures the pawn on d6, Bishop x g7 is mate. If the Bishop on e5 moves to another square, or the pawns on c6 or f3 move, or the pawn on f4 captures the pawn on e3, the Queen mates on a8, e8, h1 or h4. There are nine line-opening variations.

Sir Jeremy Morse, who recently celebrated his 80th birthday, is still very active in the chess problem world. He was chairman of Lloyds Bank when it sponsored the Lloyds Bank Masters, was an adviser to every British Chancellor between 1964 and 1997, and is also the man after whom TV detective Inspector Morse was named.

Nigel Dennis