

PREVIOUS WINNERS

Championship

2006 Ken Coates (Crowthorne)
Liam Varnam (Maidenhead)
Richard Webb (Basingstoke)
2005 Paul Cooksey (Basingstoke)
Gavin Lock (Horsham)

Challengers

2006 Andrew Winchcombe (Maidenhead)
2005 Majid Jeffries (Maidenhead)
Zafer Djabri (London NW5)

Reserves "A"

2006 James Adair (Reading)
2005 Mithun Kailavasan (Pinner)

Reserves "B"

2006 Maria Wang (Cowley)
2005 Jeffrey Levicki (Oxford)

Reserves "C"

2006 Mark Stone (Petts Wood & Orpington)
2005 Christopher Wardle (Haymarket)

Reserves "D"

2005 Robbie Coats (Swindon)

Reserves "E"

2005 Adrian Archer-Lock (Maidenhead)

Reserves "F"

2005 Adrian Kernot (East Grinstead)

Lightning Tournament

2006 Richard Webb (Basingstoke)
Stephen Cairns (Reading)
2005 Peter Poobalasingam (Finchley)
Martin Walker (Royston)

Under 14 Mrs Stean Cup

2006 James Adair (Reading)

TIMETABLE

Friday 24th August 2007

7.30 p.m. Lightning Tournament
Finishing about 10.00 p.m.

Saturday 25th August 2007

10.00 a. m. to 3.00 p.m. Round 1
3.30 p.m. to 8.30 p.m. Round 2

Sunday 26th August 2007

10.00 a. m. to 3.00 p.m. Round 3
3.30 p.m. to 8.30 p.m. Round 4

Monday 27th August 2007

10.00 a. m. to 3.00 p.m. Round 5
3.30 p.m. to 8.30 p.m. Round 6

REFRESHMENTS

Hot and cold drinks, cakes, toasties, a selection of filled rolls, sweets and crisps will be available. Any offers of help would be gratefully received, even for a short time. Profits from the sale of refreshments will be shared between the "Berkshire Junior Chess Association" and the "Friends of Nine Mile Ride School"

CHESS BOOKSTALL

There will be a chess stall at the congress by
CCF MindGames
New and used Chess Books, DVD's,
Software, Chess Computers,
Chess Equipment and Stationery,
Telephone 0208 144 5354
Email: mindgames@ccfworld.com

**43rd BERKS & BUCKS
CHESS CONGRESS**

Saturday 25th to Monday 27th August 2007
(Lightning: Friday 24th August 7.30.p.m. start)
at Nine Mile Ride Primary School,
430 Finchampstead Road, Finchampstead,
Wokingham, Berkshire RG40 3RB

TOURNAMENTS

Championship, Challengers, and Reserves tournaments will be six round "Swisses" comprising between 12 and 16 players.

CHAMPIONSHIP Prizes £80 £60 £40
players usually 165+ Entry Fee £22

CHALLENGERS Prizes £60 £45 £30
players usually 165-140 Entry Fee £19

RESERVES Prizes £40 £30 £20
graded sections Entry Fee £16

LIGHTNING TOURNAMENT
Prizes £20, £10 & £5 Entry Fee £4
Entry Fee £2 to congress participants

Entries received after Friday 17th August 2007
Extra £5

10.00 a.m. start & two rounds each day

Refreshments

Entries will not be accepted by telephone or on the day. No smoking will be permitted on the school site.

Players will play in sections according to their latest published ECF grade. As a guide last year's sections were: -

Championship	over 145
Challengers	144-123
Reservers "A"	122-110
Reserves "B"	107- 81
Reserves "C"	80- 20

The grade limits will vary according to entries.

If you play in a different section from the one you entered, any balance of entry fee will need to be paid or refunded at the event.

The rate of play in all tournaments is 40 moves in 2 hours followed by half an hour extra for each player for the remainder of the game.

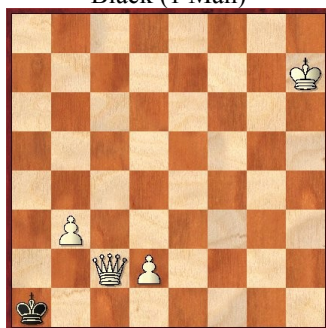
The congress is affiliated to the ECF Game Fee Scheme. ECF full direct individual members may deduct £2 from their entry fee giving their ECF direct membership number.

No half point byes will be permitted. Entry is a commitment to play in every round, and the committee reserves the right to refuse entries for any reason, including future entries from players who default without good reason.

Thanks for Donations Last year's donations, total £98.00, were gratefully received.

Congress Problem

Black (1 Man)



White (4 Men)

White to Play and Mate in 7 Moves

Directions: Nine Mile Ride Primary School

The school is at the junction of Finchampstead Road (B3016) and Nine Mile Ride (B3430), and is opposite the "Pace" garage RG40 3RB. Access to the school is via the public car park next to the school. Additional parking is available within 300 yards. Please follow directions on the day. There is no overnight parking available on the school site.

Accommodation

The Reading Visitor Centre provides an accommodation service, through which reservations can be made by phone
Telephone 0118 956 6226
<http://www.readingtourism.org.uk>

The following website has accommodation information in the Finchampstead area: -
<http://www.databrowse.co.uk/srch/townsrc/h?t=finchampstead&r=25&m=0>

The following website is for California Country Park, Nine Mile Ride RG40 4HT
<http://www.wokingham.gov.uk/your-community--district/countryside-service/countryside-sites/california-country-park>

There is a Chalet & Touring park with camping facilities adjacent to the park
Telephone 0118 973 3928

Congress Secretary

Nigel Dennis, Boundary House, 230 Greys Road, Henley-on-Thames, Oxfordshire RG9 1QY Telephone 01491 576052
nigelwdennis@btinternet.com

ENTRY FORM

43rd Berks & Bucks Chess Congress

Name:

Address:

Tel. Nr:

Email:

Chess Club (if any):

Latest ECF Grade:

Date of Birth (if under 18):

	Entry Fee	£
Championship	£ 22
Challengers	£ 19
Reserves	£ 16
Lightning Tournament	£ 4 or £ 2
Late Fee (after 17/8/2007)	£ 5
Donation (Thank you)		_____
Total Enclosed		_____

Cheques payable to: *Berks & Bucks Chess Congress*. Receipts will be sent if SAE is enclosed. The committee reserves the right to transfer entries from one tournament to another if the need arises.

Entries to: N.W. Dennis, Boundary House, 230 Greys Road, Henley-on-Thames, Oxfordshire RG9 1QY