

PREVIOUS WINNERS

Championship

- 2008 Shaun Taulbut
2007 Ken Coates (Crowthorne)

Challengers

- 2008 Philip Stimpson (Guildford)
2007 Sheila Dines (Croydon)

Reserves "A"

- 2008 Edward Tandi (West London)
2007 Thomas McFaul (Maidenhead)

Reserves "B"

- 2008 Andrew Marley (Crowthorne)
2007 Roy Zhang (Crowthorne)

Reserves "C"

- 2008 Cyril Winter (Crowthorne)
2007 Anna Wang (Cowley)
Gordon Ironside (Crowthorne)

Reserves "D"

- 2008 Philip Archer-Lock (Maidenhead)

Lightning Tournament

- 2008 Liam Varnam (Maidenhead)
Stephen Cairns (Reading)
2007 Richard Webb (Crowthorne)

Under 14 Mrs Stean Cup

- 2008 Joseph Quinn (Horsham)
James Holland (Maidenhead)
2007 Akash Jain (Pinner)
George Tunstall (Crowthorne)

THANKS FOR DONATIONS

Last year's donations, total £72.50, were gratefully received.

Directions by Car and Train

From the traffic lights in the centre of Twyford, take London Road A3032 towards Maidenhead. Continue past Loddon Hall Road on the left, and take next left into Maple Bank / Pennfields. The road bears left into Longfield Road. Turn left into Kibblewhite Crescent RG10 9AX

From London Paddington, Twyford is the last stop before Reading. The venue is 0.7 miles from Twyford station walking by the shortest route, and 1.1 miles by car.

Accommodation

Information about accommodation on the Maidenhead side of Twyford can be obtained from Royal Windsor Information Centre, Old Booking Hall, Windsor Royal Station, Thames Street, Windsor, Berkshire SL4 1PJ. Tel: 01753 743907. Email: windsor.tic@rbwm.gov.uk
Accommodation in Reading will be limited over this weekend owing to the Reading Festival.

Refreshments

Refreshments will include hot and cold drinks, sandwiches, toasties, crisps and home made cakes. Profits from the sale of refreshments will be shared between the "Berkshire Junior Chess Association" and the "Friends of Nine Mile Ride School".

Bookstall

A chess stall will be provided by Francis Bowers Chess Suppliers, 62 Pennine Way, Gunthorpe, Peterborough, PE4 7TE. Tel: 01733 579569
Email: chessbower@aol.com
Please write, phone or email for advanced orders

45th BERKS & BUCKS

CHESS CONGRESS

Sat 29th to Mon 31st August 2009
at Polehampton C of E Junior School,
Kibblewhite Crescent, Twyford,
Berkshire RG10 9AX

TOURNAMENTS

10.00 a.m. Start

Two Rounds Each Day

Six round graded sections 12 to 16 players.

CHAMPIONSHIP Prizes £60 £48 £36

FIDE Rated Entry Fee £20

British Championship 2010 Qualifying Place

CHALLENGERS Prizes £60 £48 £36

FIDE Rated Entry Fee £20

RESERVES Prizes £60 £48 £36

Several sections Entry Fee £20

Entries after Fri 21st Aug are an extra £5.

Entries will not be accepted by telephone, or on the day, or on Fri 28th Aug, apart from entries that arrive through the post. Entries will not be accepted for the Championship and Challengers sections after Wed 26th Aug.

Smoking is not permitted on the school site.

LIGHTNING TOURNAMENT

Prizes £20 £10 £5 Entry Fee £3

Friday 28th August 7.30p.m.

Timetable

Friday 28th August 2009, Lightning Tournament
Starting 7.30 p.m and finishing about 10.00 p.m.
10 Seconds for each move

Saturday, Sunday and Monday

10.00 a. m. to 3.00 p.m. Rounds 1, 3 & 5
3.30 p.m. to 8.30 p.m. Rounds 2, 4 & 6

Sections, Grading and ECF Membership

Players will play in sections according to their latest ECF grade or FIDE rating. All sections will be ECF graded. All players in the Championship and Challengers sections must be members of the ECF or their national federation, and give their date of birth. These two sections will be FIDE rated. English Chess Federation members may deduct £2 from their entry fee, giving their ECF membership number.

Rate of Play and Default Time

The rate of play in all tournaments is 40 moves in 2 hours followed by half an hour extra for each player for the remainder of the game. Players arriving more than one hour late will be defaulted.

Playing in Every Round

No half point byes will be permitted. Entry is a commitment to play in every round, and the committee reserves the right to refuse entries for any reason, including future entries from players who default without good reason.

Congress Secretary and Arbiters

Secretary: Nigel Dennis, Boundary House, 230
Greys Road, Henley-on-Thames, Oxfordshire RG9
1QY Tel: 01491 576052

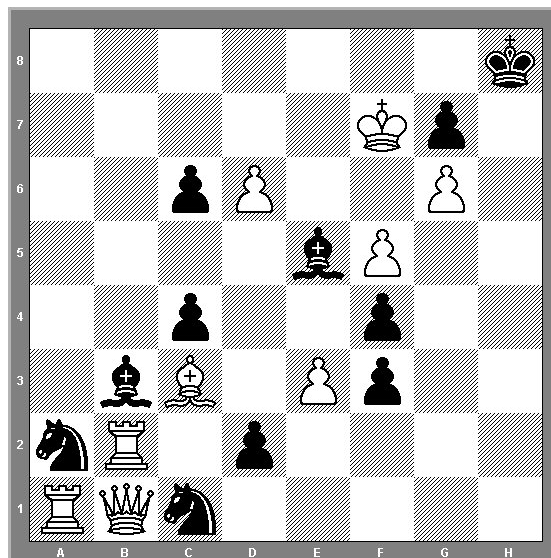
Email: nigelwdennis@btinternet.com

Arbiters: Neville Belinfante and Priscilla Morris

Congress Problem

By Sir Jeremy Morse (The Observer 1967)

Black (11 Men)



White (9 Men)

White to Play and Mate in 2 Moves

For solution, see Berkshire or Buckinghamshire websites.

Trophies

The winner of the Championship will hold The Championship Cup. The winner of the Challengers will hold The Challengers Cup. The winner of Reserves "A" will hold The Alan Cox Cup. The Mrs J. Stean Trophy will be presented to the most promising player age under 14 on the first day of the congress. There will be trophies to keep for section winners, runners up, and most third place players.

British Championship Qualifying Place

The highest placed eligible player in the Championship will be awarded the right to enter the 2010 British Championship at the University of Kent, Canterbury, upon payment of their own entry fee.

ENTRY FORM

45th Berks & Bucks Chess Congress

Name:

Address:

Tel. Nr:

Email:

Chess Club (if any):

Latest ECF Grade.....

Latest FIDE Rating.....

ECF Membership Number.....

Date of Birth.....

	Entry Fee	£
Entry – all sections	£ 20
ECF member deduct	£ 2
Lightning Tournament	£ 3
Late Fee (after 21/8/2009)	£ 5
Donation (Thank you)	
Total Enclosed	

Cheques payable to *Berks & Bucks Chess Congress*. Receipts will be sent if SAE is enclosed.

Entries to: N.W. Dennis, Boundary House, 230
Greys Road, Henley-on-Thames, Oxfordshire
RG9 1QY